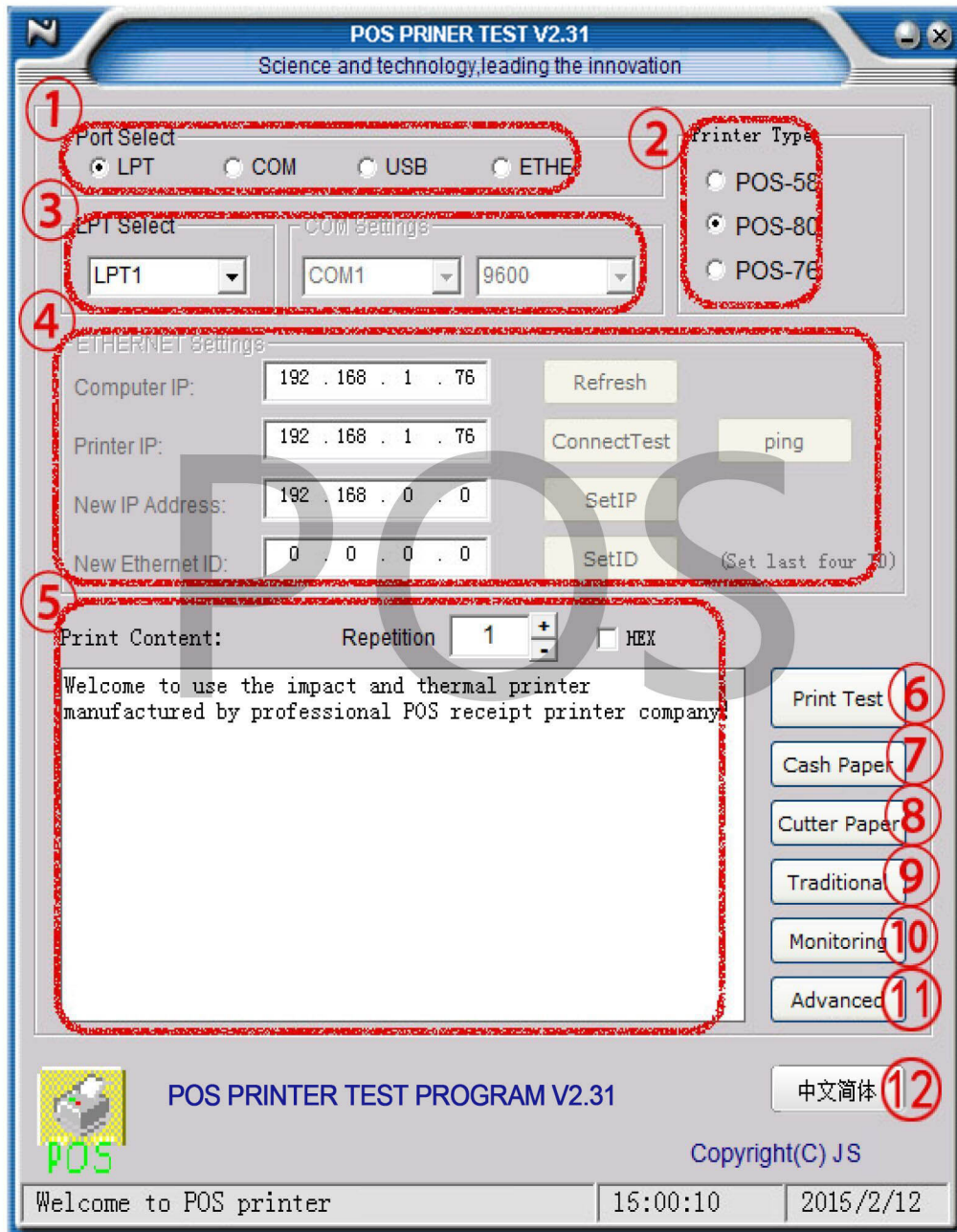


POS-Test Software Manual

一、 User Interface



① Port select :

Choose of port

·You can choose below communication interface as below:

- Parallel * serial * USB * Lan

Printer mode

The mode of printer (basic on printer head), total 3 series as below:

POS-58-----58 series printer

POS-80-----80 series printer

POS-76-----76 series printer

LPT Select and Com Settings

LPT Select----- different parallel to connecting the printer

Com Settings---- set up the serial of its different property, the serial name including the transfer baud rate

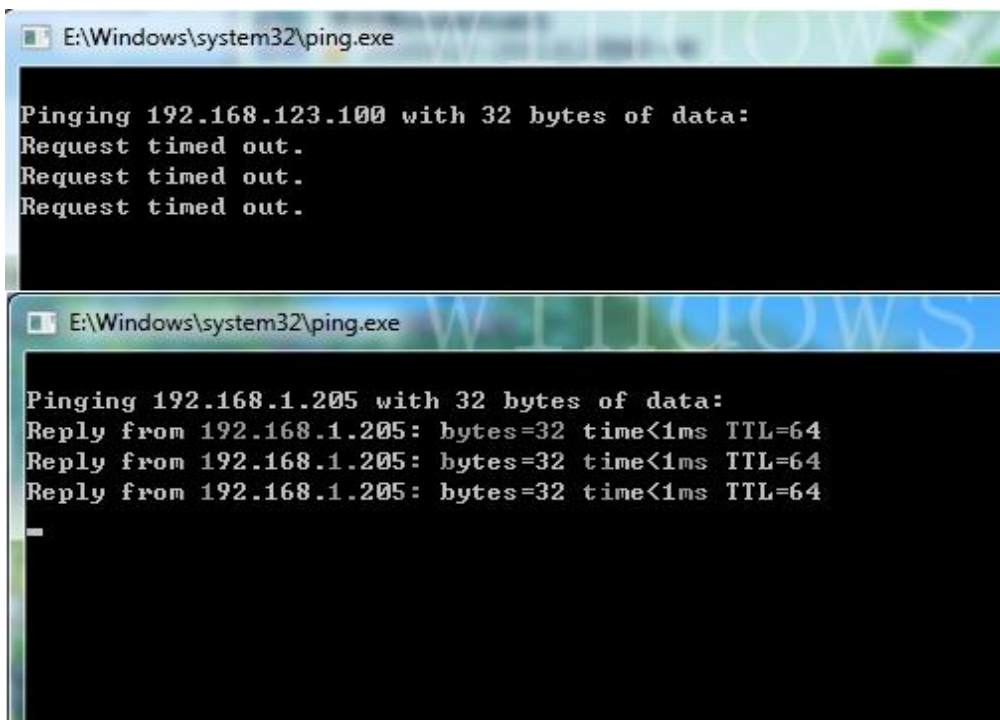
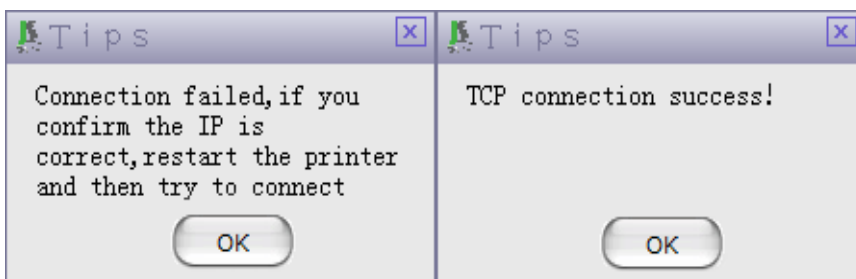
② Ethernet Settings

Set the printer network interface, its property, IP and connecting test

Refresh: refresh and obtain the current computer IP which show on the "**IP**" message box

Connet test: type the current printer IP address at the "**current IP**" , and click "**connect test**" to check if connecting with printer, also you can click "**Ping**" to test. (this way can open a Windows dialogue means

CMD.exe-Ping.exe)



Set IP : set the new IP address for the printer. First to type the new IP address at the message box , and click the "**set IP**" button to finish it .

Set ID : The MAC address (the network card hardware) have distribute a new MAC address (only set for last four numerical)

First to type the **New Ethernet ID** (last four numerical) at the "**New Ethernet ID**" and then click "New Ethernet ID" button to finish it a New Ethernet ID

Notice: it must be algorithm while fill the numerical

③ Print test content

You can type the test content at the edit box , and can type the code while typing barcode, also can type what you what to type when the printer in command situation

Repeat times: you can click +/-to add or reduce the numerical value, of course you can type the number directly

Hex: type the content of hex to test print (this way is better for barcode data)

④ Print test

For printing the "*print content*"

⑤ Cash paper

For open the cash drawer

⑥ Cutter Paper

Starting up auto cutting (it is suitable for the printer with auto cutting)

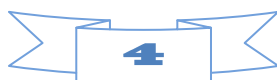
⑦ Traditional Chinese test

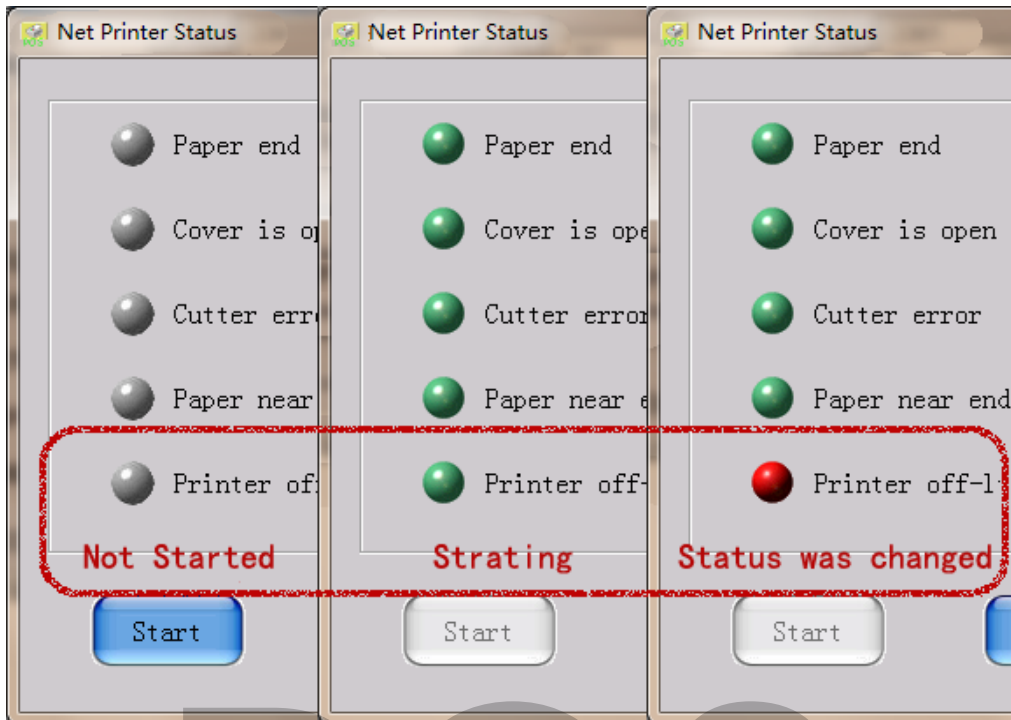
Test the Traditional Chinese printing

⑧ Status monitor

For monitor the status of the printer

Pls click "*monitoring*" and open a windows of print monitor, pls click "*monitoring*" button to learn the status of the printer, while the green light turn on means it is connecting in regularly, while the red light turn on it is means the status was change





⑨ Advanced

For print and test something of the advanced property setting

Click the advanced button to pop up a windows of advanced set up

[\(regarding the advanced , pls see the advanced instruction\)](#)

⑩ English & simple Chinese

Switch the English and Chinese UI

二. Network interface printer IP set and use methods

1、 modify printer IP

To achieve computer (or POS machine) between network interface successfully communication , you must set the same and unique IP and ID address at the current gateway. Such as the computer (or POS machine) IP address is

192.168.1.111, the current computer (or POS machine) IP address is 192.168.123.100 by the gateway of 192.168.1.1.

If the IP address is different between the computer (or POS machine) gateway and printer gateway Or you want to modify the IP address, pls follow below step to modify.

Such as If the user current computer(or POS machine) IP address is 192.168.1.76, but the printer actual IP address is 192.168.123.100, the network segment is 192.168.1, you must modify the same segment as 192.168.1; for example: you can follow below step to modify the network segment



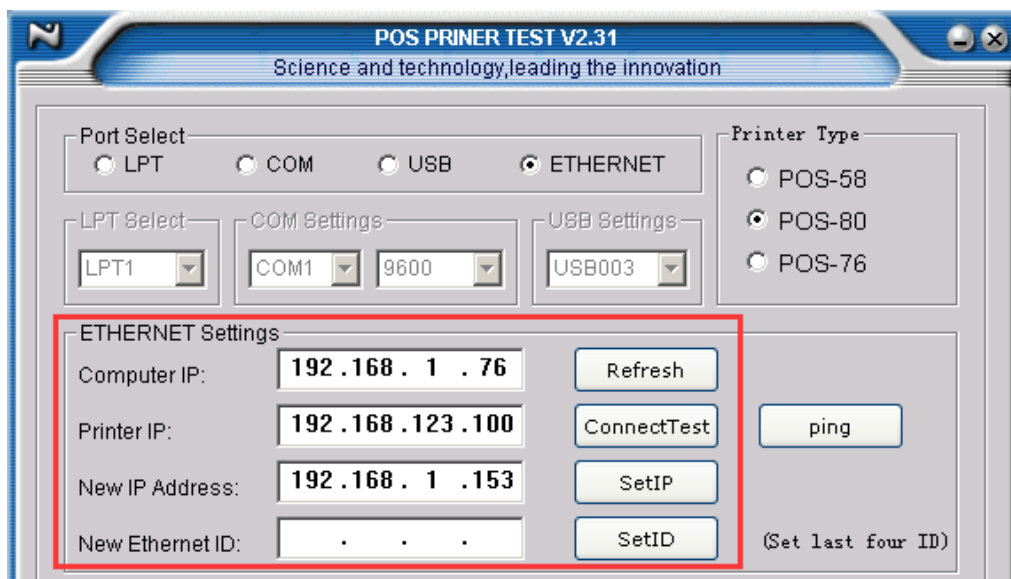
- 1.1 Conneting computer (or POS machine) and printer
 - 1.1.1 Computer and the printer connecting together via the cross line
 - 1.1.2 Computer connecting with the printer via HUB, ROUTER,SWITCH which is by the straightline.
- 1.2 Print test page to get the printer IP address

After conneting printer, pls press "Feed" button and turn the power on, first the printer will diaplasis test, then loosen the "Feed" button within 5 second.Then you can see the print self test until see below content

*******Completed*******

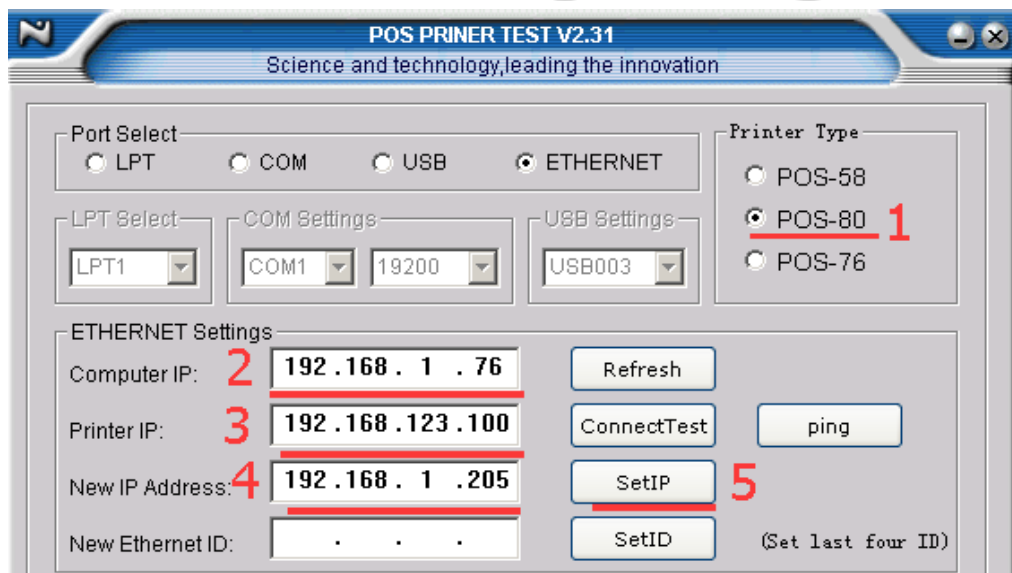
You can check the IP address from self test page

1.3 Open POS test software, modify the IP address follow below step



Such as If the user current computer(or POS machine) IP address is 192.168.1.76, but the printer actual IP address is 192.168.123.100, the network segment is 192.168.1, you must modify the same segment as 192.168.1;

for example: you can follow below step to modify the network segment

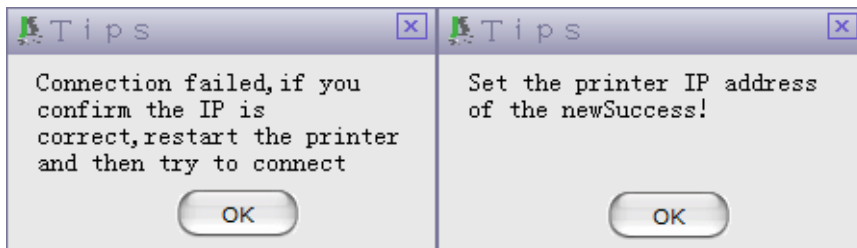


② Choose the mode of the printer----divided as the printer head width , such as POS-80 is 76mm dot series printer

③ Refresh the current IP address for the current computer

- ④ **Type the printer IP address---** through the self test page to check it
- ⑤ **Type the new IP address----**192.168.1.205

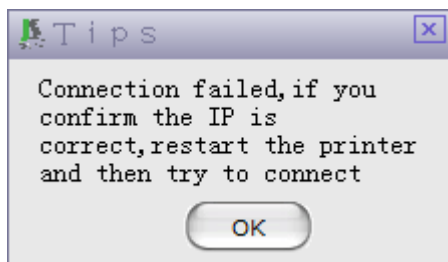
Click '**Set IP**' button, There will have 10-20 seconds (if computer's (or Pos Machine's) IP and printer's IP at different gateway, Make Computer (or Pos Machine) network disconnect, Not until modify and restore network)



IP and printer's IP at different gateway, Make Computer (or Pos Machine) network disconnect, Not until modify and restore network) when appear above any Message Box, Please shut down printer power, After 2-3 seconds, renew print test page.

If printer IP don't modify, Then check printer power、 Network Cable、 NetWork Connect, And duplicate 1-5 step.

If printer IP modify success, Then click connect testing (like as below).



If it appear this message box, Please shut off and turn on printer power, afresh testing. If it appear disconnect Message box, May

reason:(When printer oneself testing, IP is change)

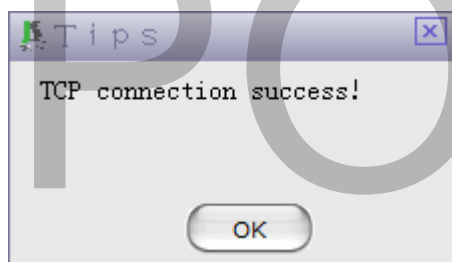
① **Printer new IP** Address if is same with others IP will caused conflict

dispose method: Break off other network connect device, again modify printer IP Address. And connect all devices connect test.

② **Printer new IP** Address and current gateway is different

dispose method: If test printer connect, Must printer IP (IP address front 3)and gateway config current gateway same.

③ **It appear rarely the same ID Please** Break off other network connect device, Forbidding and Enabled computer's(or POS machine's) network connect. Modify printer's ID.



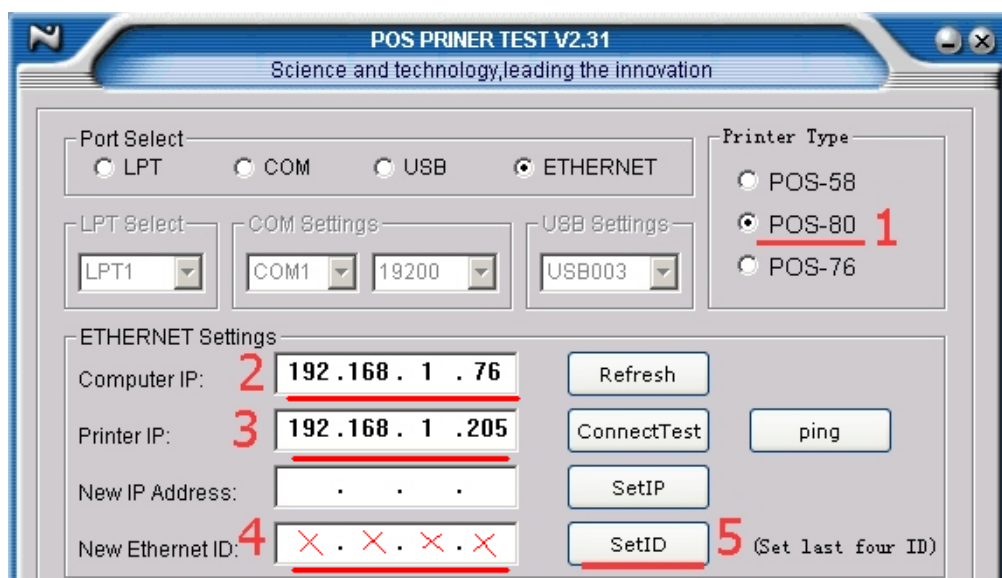
If be show below message box, means it is O.K for the printer at the current gateway also can be use in normally

2. Modify ID

In normally there is no necessary to modify the printer ID (except if conflict at network ID)

The random ID have been distribute at factory. If you want to modify the printer ID, you can type the ID (ID address last 4) at " ***New Ethernet ID*** " as below operation, it will be modify successful if the computer (or POS machine) was connecting with the printer

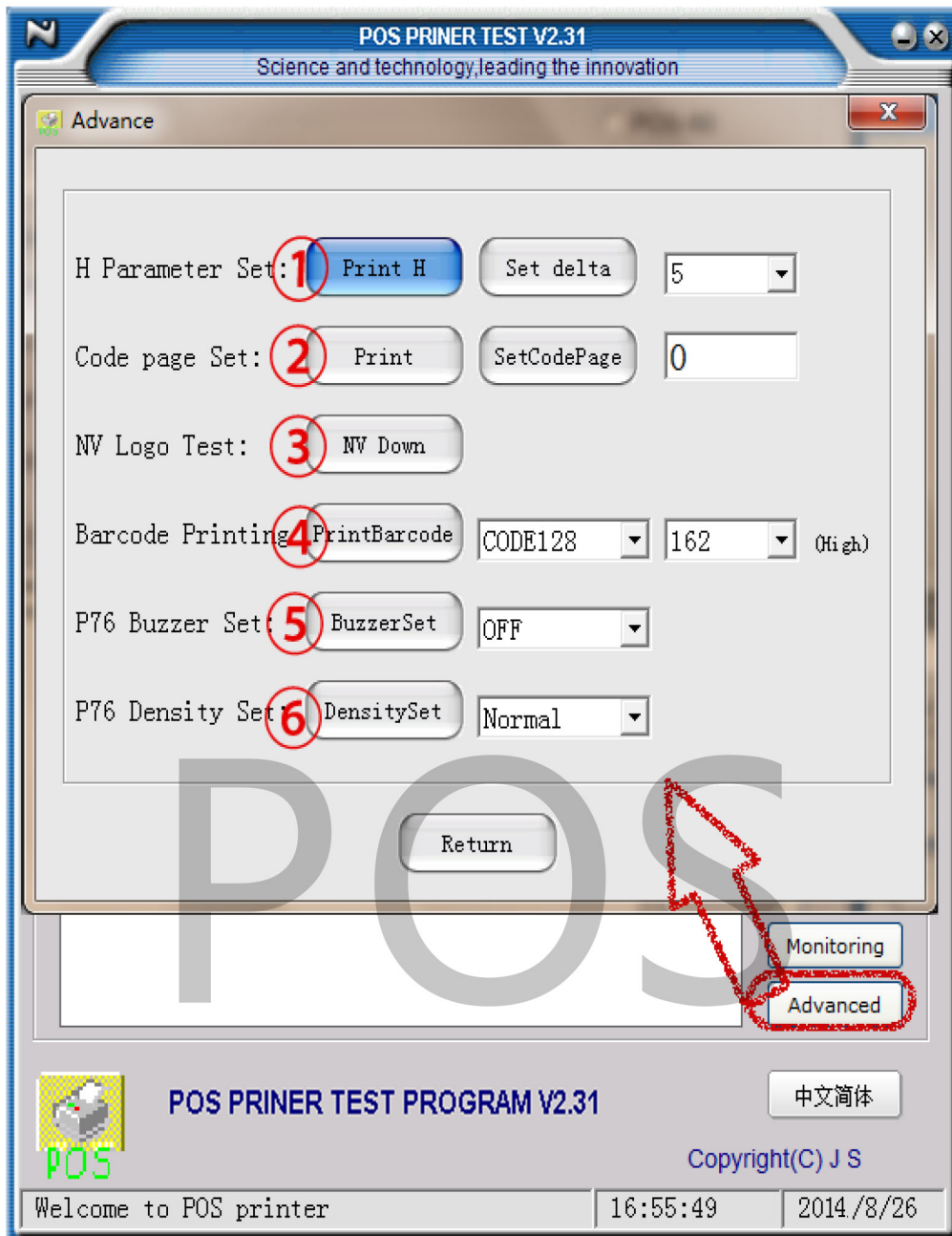




- ① **Choose the mode of the printer**----divided as the printer head width , such as POS-80 is 76mm dot series printer
- ② **Refresh the local IP** address for the current computer
- ③ **Type the printer IP address**--- through the self test page to check it
- ④ **Type the new ID address**----the numerical value between 0-255
- ⑤ Click '**Set ID**' button,There will have 10-20 seconds
if you can see the dialogue box, pls print self test, if you can' t see it, pls try again

≡、Printer the Advance configuration

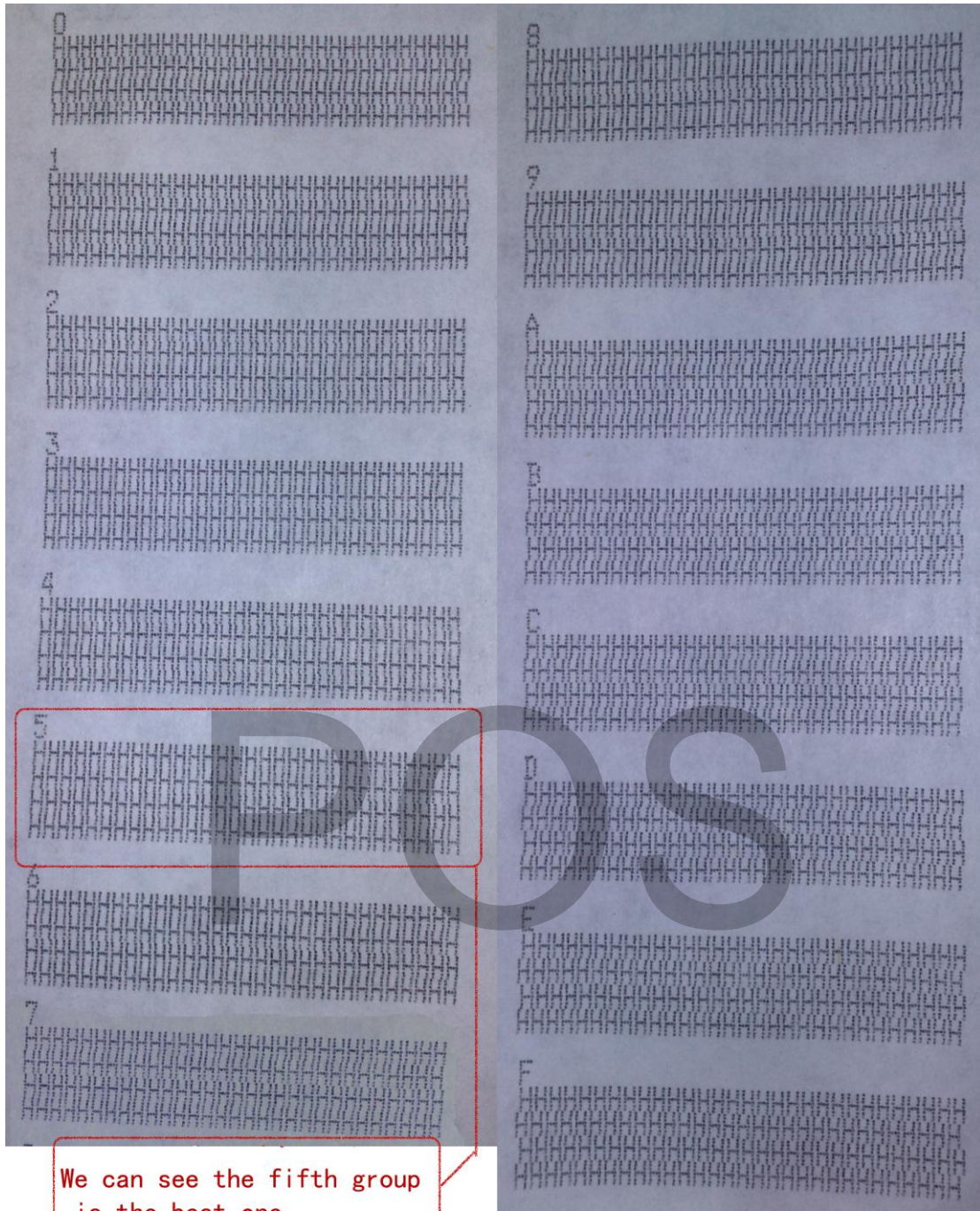
You can click the "**Advance**" button to enter the mainboard



① Set up H dot series parameter :

To set up the align way via the H parameter

To operation the printer First you need to click "**print H**" button , the printer will print 16 group "H" , each group have 4 row as below

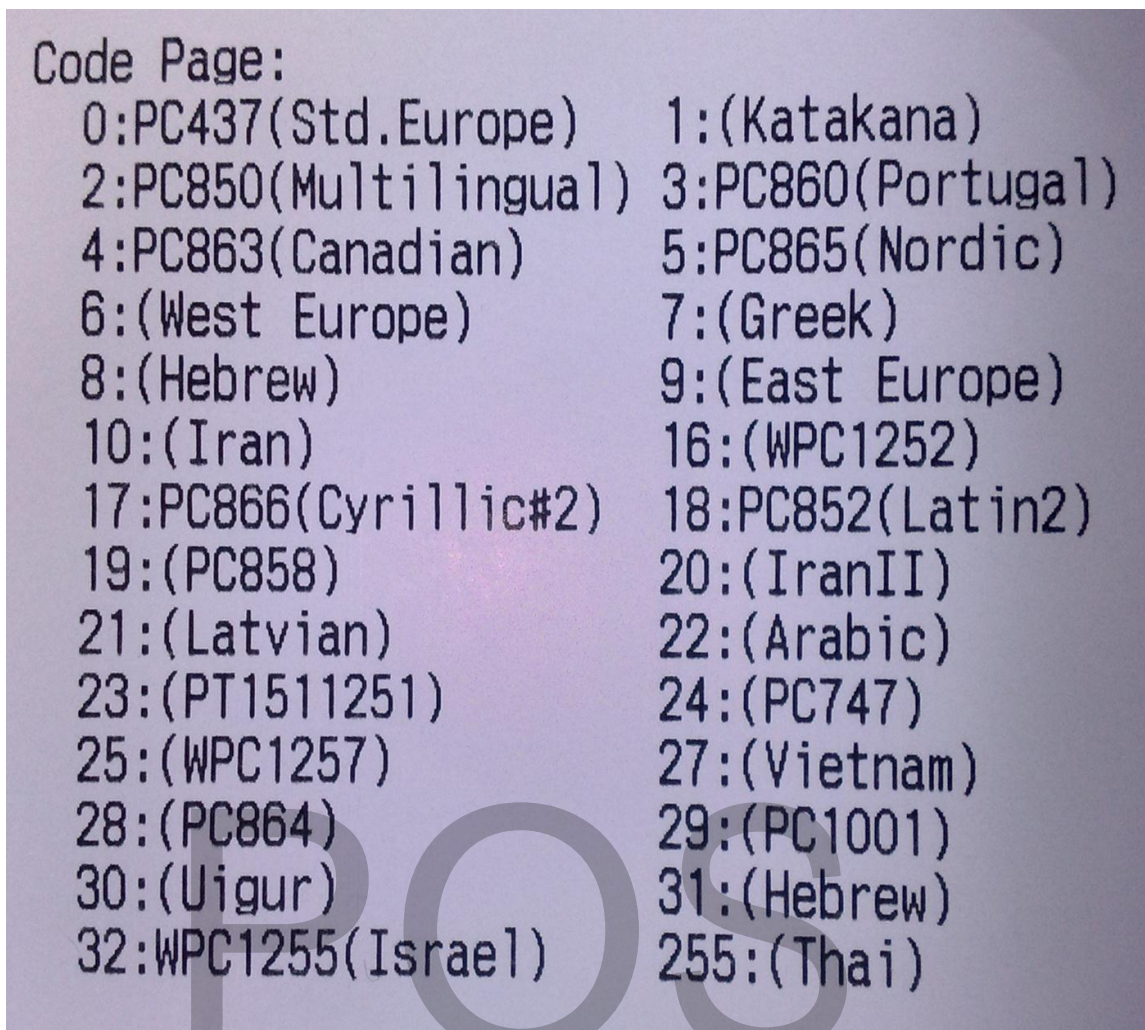


After confirm the parameter is for "5" , pls choose 5 at "*set delta*" , then click "*delta*" to set the numerical to finish it

② Set code page

To modify the printer acquiesce code page via this set

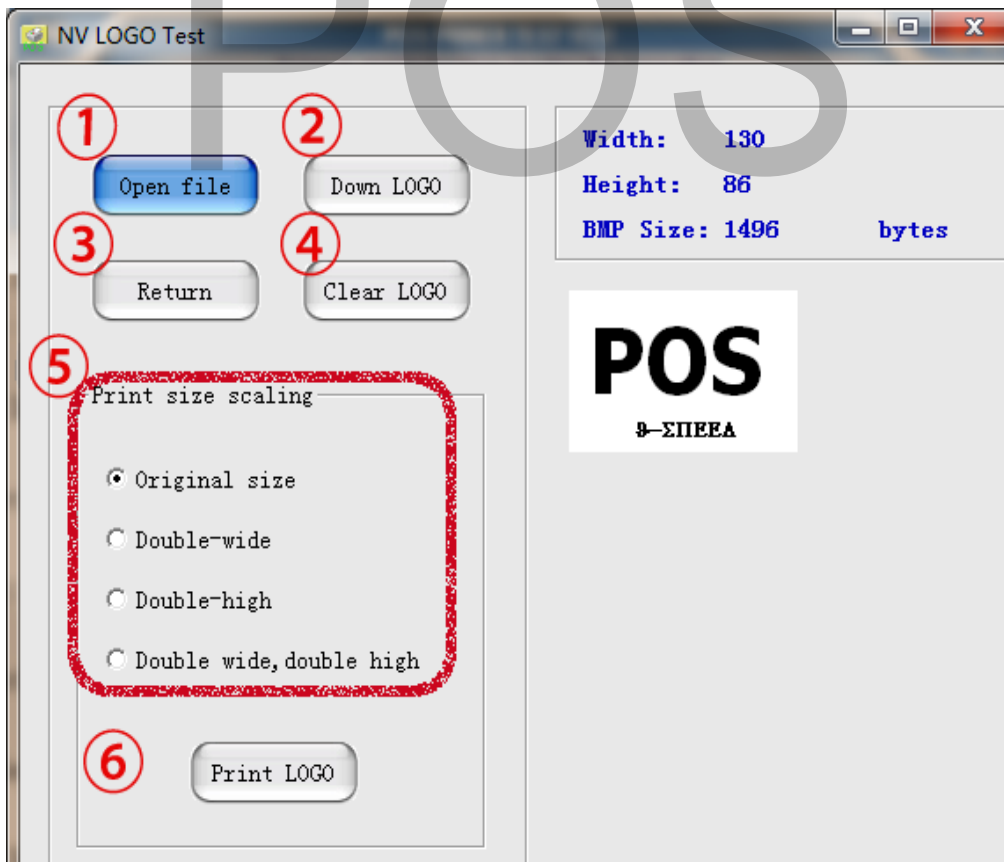
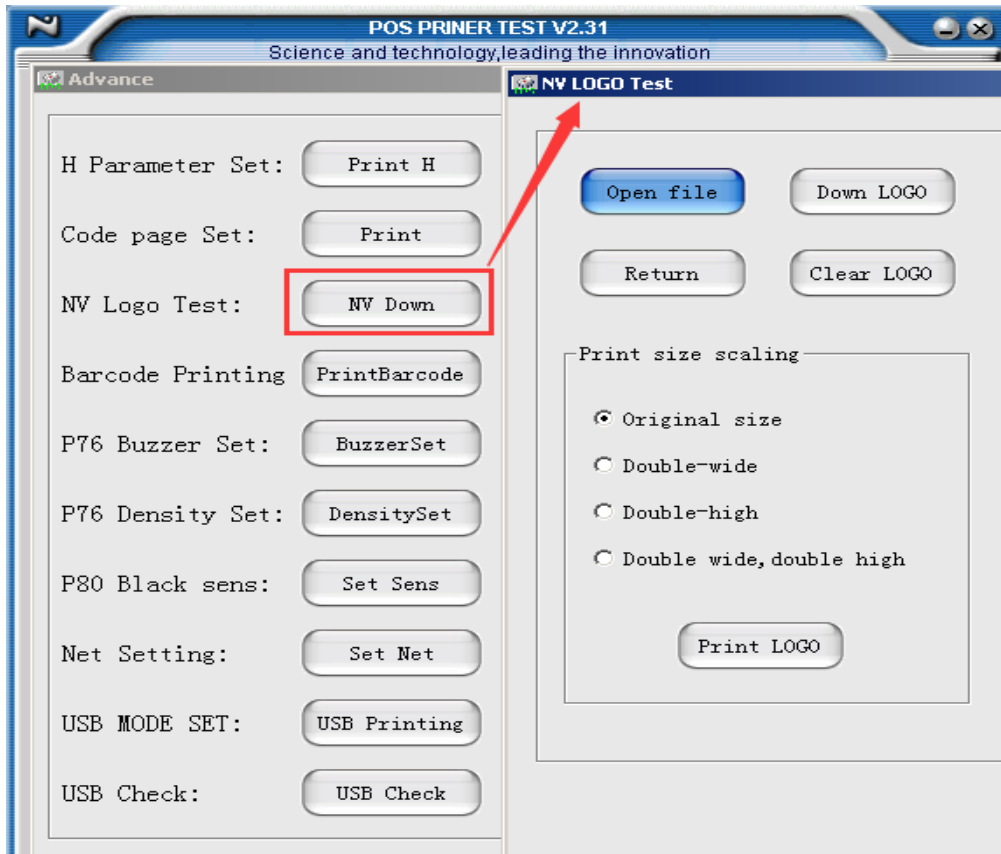
The relation parameter and the class of code page you can obtain via the self test As below: 80 series code page information



You can fill the parameter numerical of the code in the message box, then click the setting page, while finish that, you can click the code page and to check the code you set

③ NV logo demo:

You can print the BMP picture via this function, click " *NV download*" to enter it



① *open BMP file, choose the picture or the logo you want to print*

must be a file of BMP form

- ② **down load NV LOGO**, you can download your picture or logo to this program for printing
- ③ **return back**, return back the menu, a advanced window
- ④ **delete NV LOGO** , delete the download logo or picture have been this progarm
- ⑤ **the print size zoom** , you can choose the printing effect as for big or distortion as below actual effect
- ⑥ **after finish above setting**, you can click "NV LOGO" to print your picture or logo

POS

Original size **POS**
Θ-ΣΠΕΕΑ

Double wide **POS**
Θ-ΣΠΕΕΑ

Double high

POS
Θ-ΣΠΕΕΑ

Double wide & double high

POS
Θ-ΣΠΕΕΑ

④ **Barcode printing test :**

Choose different kinds of barcode then set the higher of barcode printing for test

⑤ **P76 Buzzer Set :**

If you want to close the Buzzer, pls choose OFF button, if open it pls choose ON button, you can click the "Buzzer set" to confirm the position

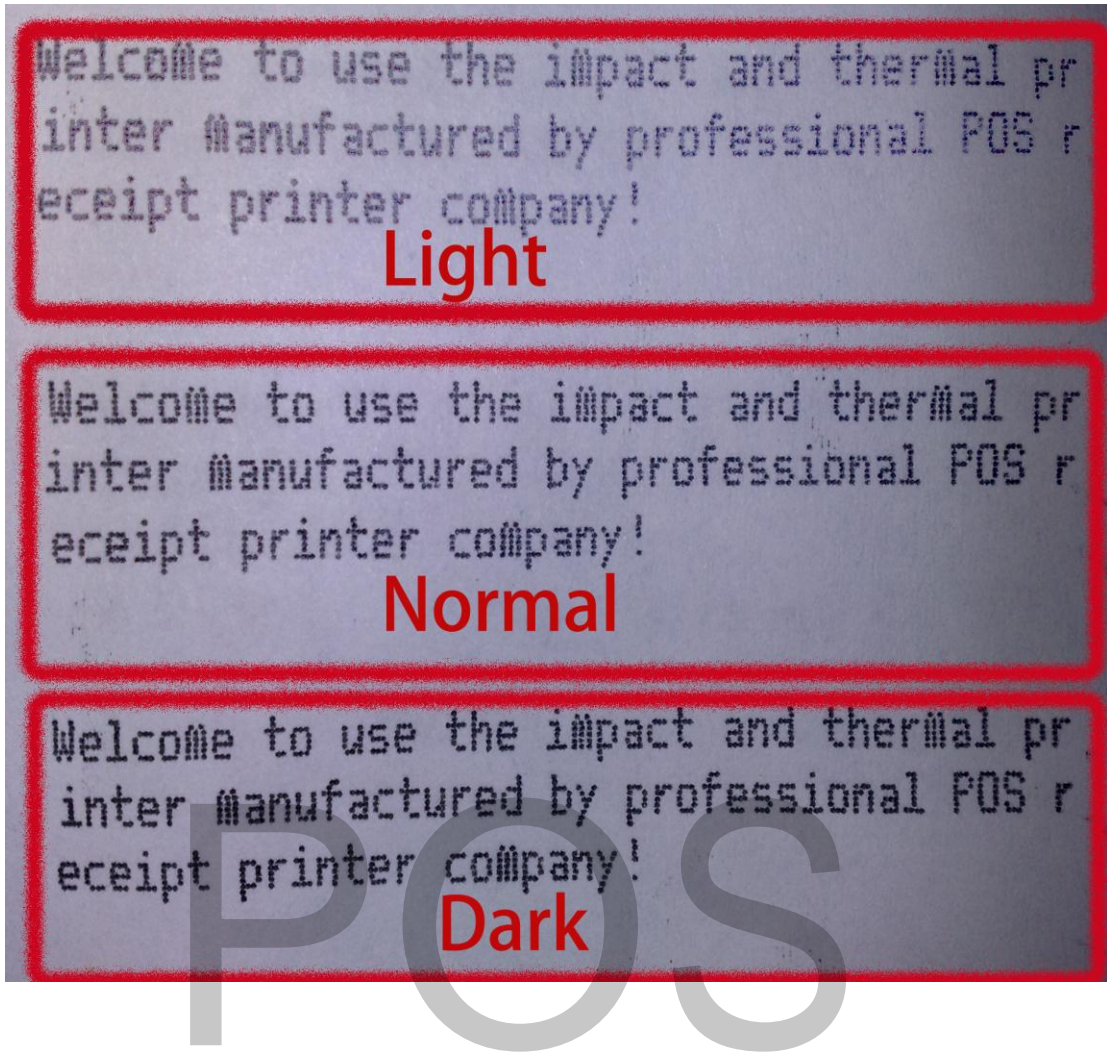
⑥ **P76 Density set :**

We offer three mode for user choose :

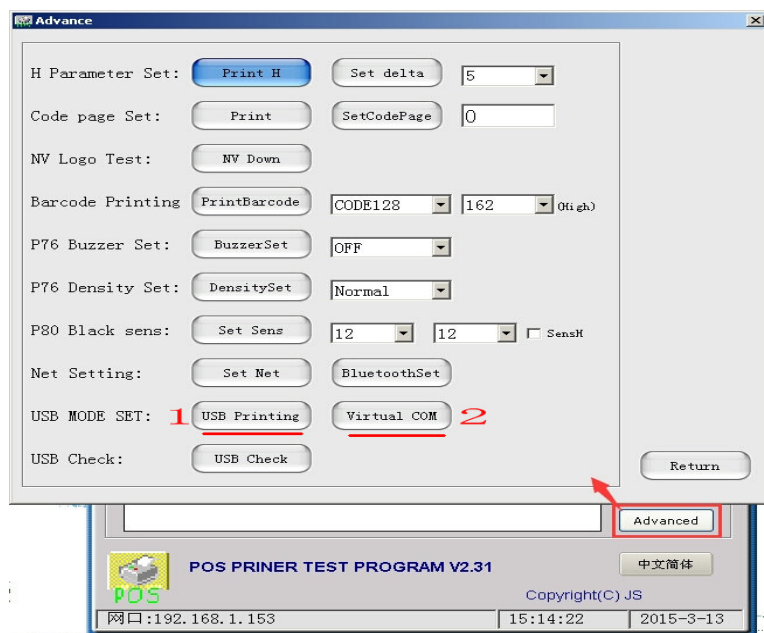
LIGHT NORMAL DARK

The mode effect as below picture

(The picture is only for reference, the actual effect pls check with your printer)

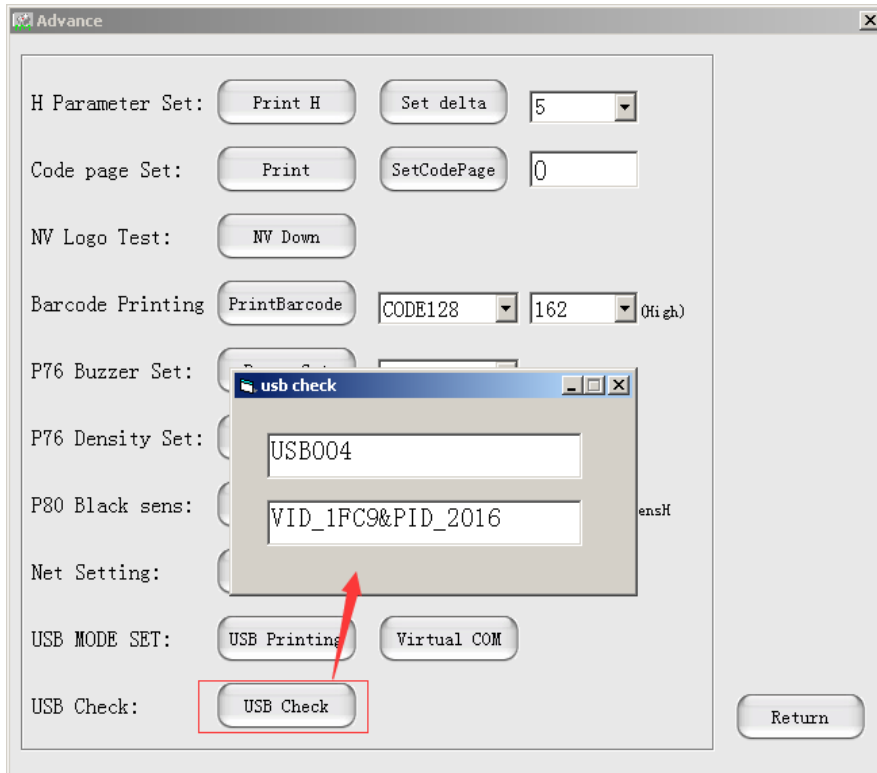


⑦ USB MODE SET:



The above two kinds of set print mode : 1.USB Printing 2.Virtul COM

8.USB Check :



Click on the USB check will specify the display USB port

<<Over>>